



**RELIANCE CORPORATION**  
Let's Grow Together

## **Reliance StoreNXT - POS Ecosystem**

---

Ecommerce | POS | Accounting

Version 0.8 - May 19th, 2020

<https://reliancecorporation.co.za/>

**The availability of simple solution for Store Owners & Companies to sell their products online to their neighborhood and cash in on the trust built up over the years from their loyal customer base.**

For Information call us on 0636872404 or email us [info@reliancecorporation.co.za](mailto:info@reliancecorporation.co.za)

# Solution

---

For Information call us on 0636872404 or email us [info@reliancecorporation.co.za](mailto:info@reliancecorporation.co.za)

**Reliance StoreNXT Customer Application**

**Reliance MicroNXT POS**

**Reliance StoreNXT Manager**

**Backend**

# Reliance StoreNXT Customer Application

---

# Customer Onboard



## 1 Customer Registration

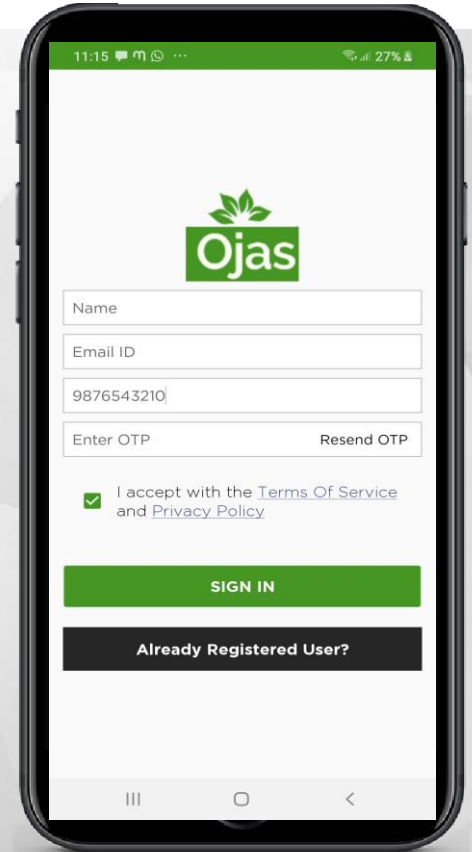
- Registration with Mobile number
- OTP verified customers will be onboarded

## 2 Customer Sign-in

- Customer login with OTP verification
- Privacy Policies, Terms & Conditions

## 3 Customer Profile Update

- Favorite Product List.
- Delivery Addresses.



For Information call us on 0636872404 or email us [info@reliancecorporation.co.za](mailto:info@reliancecorporation.co.za)

# Product Catalog & Listing

1

## Product Catalog Listing

- Categories, Subcategories, Child Categories.
- Listing all Products

2

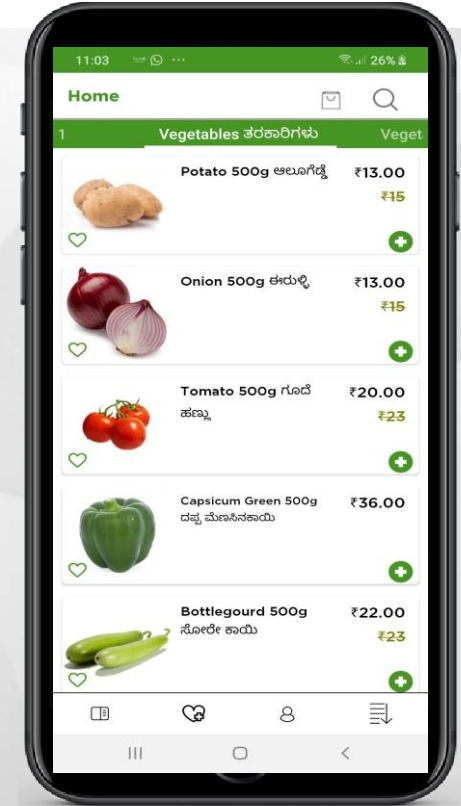
## Product SKU Information

- Detail Product Specification
- Multiple product variants

3

## Select Product on Choice

- Product Attributes list like color, size, etc
- Increase or Decrease selected product SKUs



For Information call us on 0636872404 or email us [info@reliancecorporation.co.za](mailto:info@reliancecorporation.co.za)

# Checkout & Order confirmation

1

## Order Placed to Order Cart.

- Customer selected order shown in Checkout screen.
- Edit Order quantity in Checkout screen

2

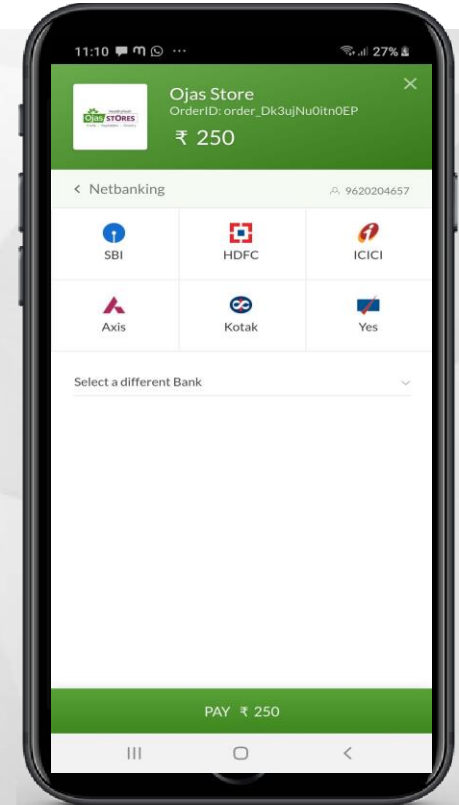
## Select Delivery Detail

- Pickup in store
- Home Delivery
- Order Subscriptions
- Scheduling Appointment

3

## Select Payment Option

- Pay Online with Payment Gateway.
- Cash on Delivery
- Receipt with order details



For Information call us on 0636872404 or email us [info@reliancecorporation.co.za](mailto:info@reliancecorporation.co.za)



# Reliance MicroNXT - POS

---

For Information call us on 0636872404 or email us [info@reliancecorporation.co.za](mailto:info@reliancecorporation.co.za)

Copyright © 2017, North America Photon Infotech Ltd.  
ALL RIGHTS RESERVED. PROPRIETARY AND CONFIDENTIAL INFORMATION

# Storefront Billing | POS Terminal

1

## POS Terminal

- Multi - POS hardware support
- Store employee login
- Product listing and billing
- Employee & Customer tagging.
- Suspend Order
- Barcode scan

2

## Offline Sale & Online Orders

- Bill offline and Sync later
- Link Online Customer Order
- Process Online Orders
- Offline Inventory view

3

## Store Offline Report Detail View

- End of the day Sale report
- Bill-wise sale
- Item sale report



# Store Order Process

1

## Order Received at Store app

- Store Manager receives Customer Order request.
- Store should Accept or Reject customer order

2

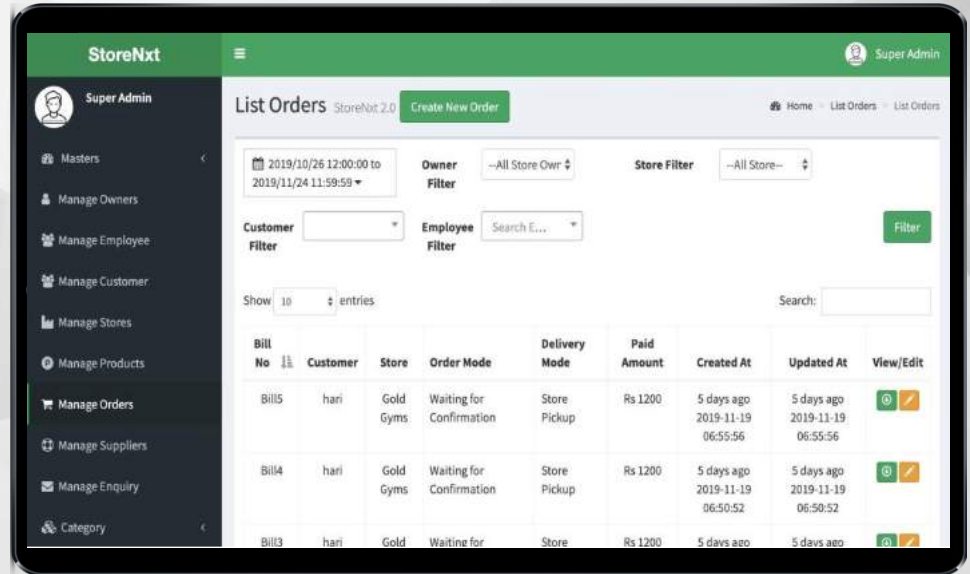
## Order Tracking Flow

- Waiting for Confirmation
- Order In-Progress
- Order In-transit
- Order Delivered

3

## Store Order Detail View

- Store manager can view order detail with date-time
- Order manager with date filter and Order status



For Information call us on 0636872404 or email us [info@reliancecorporation.co.za](mailto:info@reliancecorporation.co.za)

# Store Admin Console

1

## Product Management

- Add, Edite, View and Delete product details
- Product discounts and Product Kit combinations
- Sale price Vs Cost price Vs MRP

2

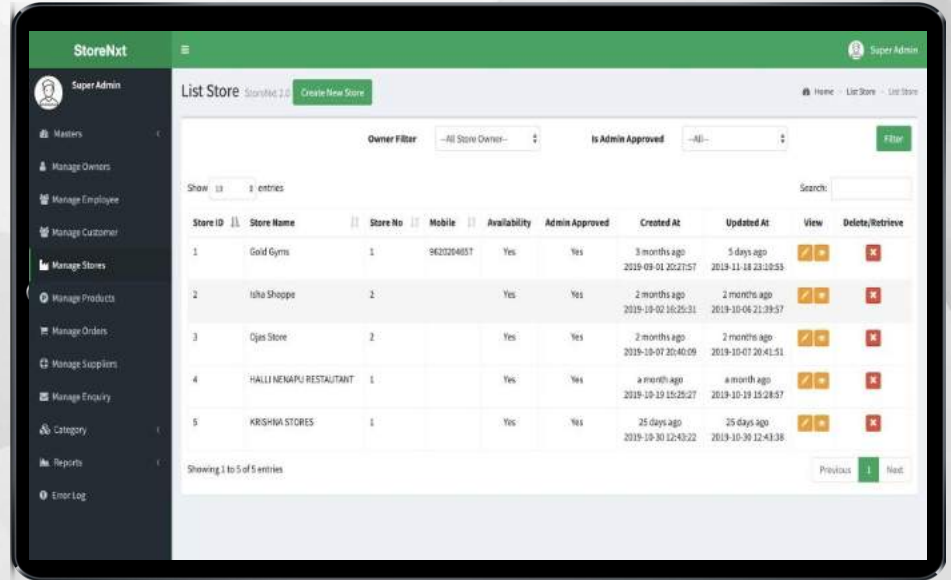
## Store Management

- View and Edit Store information
- Add various store configurations like printer, locations, availability, timezone, tax setup, etc
- Store availability for ecommerce setup

3

## Sale Management

- Sale and Return transaction.
- Receivings and Purchase order
- Quotation & Customer Enquiry management
- Suspend order management



The screenshot displays the 'List Store' page in the StoreAdmin console. The interface includes a sidebar with navigation options like 'Masters', 'Manage Owners', 'Manage Employee', 'Manage Customer', 'Manage Stores', 'Manage Products', 'Manage Orders', 'Manage Suppliers', 'Manage Enquiry', 'Category', 'Reports', and 'Error Log'. The main content area shows a table of store entries with columns for Store ID, Store Name, Store No, Mobile, Availability, Admin Approved, Created At, and Updated At. Each row has 'View', 'Delete/Retrieve', and 'Filter' icons. The table lists five stores: Gold Gyms, Isha Shoppe, Gjes Store, HALLI NENAPU RESTAURANT, and KRISHNA STORES.

Store ID	Store Name	Store No	Mobile	Availability	Admin Approved	Created At	Updated At	View	Delete/Retrieve
1	Gold Gyms	1	9620204851	Yes	Yes	3 months ago 2019-09-01 20:27:57	5 days ago 2019-11-18 23:10:53	👁️	🗑️
2	Isha Shoppe	2		Yes	Yes	2 months ago 2019-10-02 16:25:31	2 months ago 2019-10-04 21:39:57	👁️	🗑️
3	Gjes Store	2		Yes	Yes	2 months ago 2019-10-07 20:40:09	2 months ago 2019-10-07 20:41:51	👁️	🗑️
4	HALLI NENAPU RESTAURANT	1		Yes	Yes	a month ago 2019-10-19 15:25:27	a month ago 2019-10-19 15:28:57	👁️	🗑️
5	KRISHNA STORES	1		Yes	Yes	25 days ago 2019-10-30 12:43:22	25 days ago 2019-10-30 12:43:38	👁️	🗑️

For Information call us on 0636872404 or email us [info@reliancecorporation.co.za](mailto:info@reliancecorporation.co.za)

# Store Admin Console

## 1 Employee Management

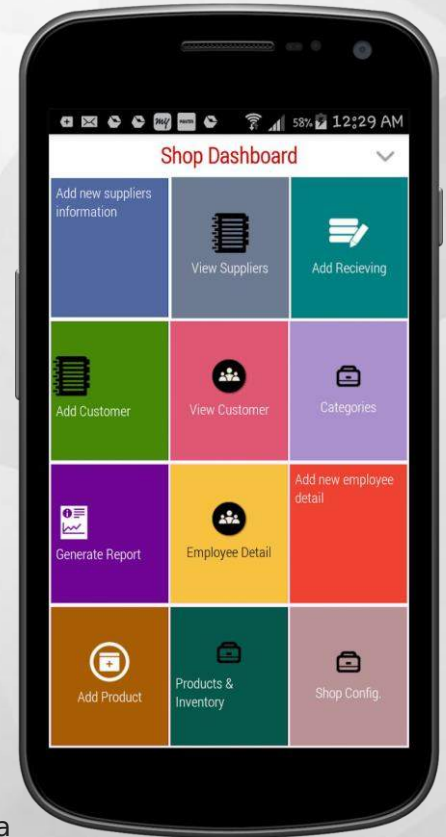
- Add, Edite, View and Delete Employee details
- Employee provided with PERMISSIONS to access store features
- Employee tagged to each sale to monitor employee performances

## 2 Customer Management

- View customer information
- Send payment reminder, marketing and special occasion messages

## 3 Supplier Management

- Add, Edit, View and Delete supplier detail
- Tag supplier to each products



For Information call us on 0636872404 or email us [info@reliancecorporation.co.za](mailto:info@reliancecorporation.co.za)

# Store Reports

1

## Sale Report

- Report with Date-Time filter
- Employee performance report
- Customer report
- Report based on Order status

2

## Product-wise Report

- Product performance tracking
- Low inventory Report
- Inventory tracking report

3

## Tax Reports

- Tax summary report
- Detail tax reporting

Bill No	Sale Type	Sales Date	Item Count	Sub Total	Discount	Total Tax	Grand Total	Total Profit	Employee	Customer
BB5	POS	5 days ago 2019-11-19 06:55:56	1	1200.00	0.00	240.00	1200.00	1200.00		hari
BB4	POS	5 days ago 2019-11-19 06:50:52	1	1200.00	0.00	240.00	1200.00	1200.00		hari

Item ID	Name	Note	Price	Discount	Qty	Tax	Total
.33	One Month Express Pack		1200.00	0.00	1 Pack	Rs240.00(Total) Rs120.00(CGST) Rs120.00(SGST)	960.00
<b>Sub Total:</b>							<b>Rs960.00</b>
CGST:							Rs120.00
SGST:							Rs120.00
<b>Total Tax:</b>							<b>Rs240.00</b>

For Information call us on 0636872404 or email us [info@reliancecorporation.co.za](mailto:info@reliancecorporation.co.za)

# Security

1

## HTTPS | TLS 1.2

- All transaction happens in SSL secure protocol.
- Entire system is protected under Microsoft Azure

2

## Certificate Pinning

- Man in middle attack is prohibited
- Request and Response processed only between trusted entities

3

## Two Factor Authentication

- Unauthorized access to store backend is blocked by 2 Factor Authentication.
- User should authorize with SMS OTP sent to their registered mobile number.



For Information call us on 0636872404 or email us [info@reliancecorporation.co.za](mailto:info@reliancecorporation.co.za)

# Growth & Metrics

---

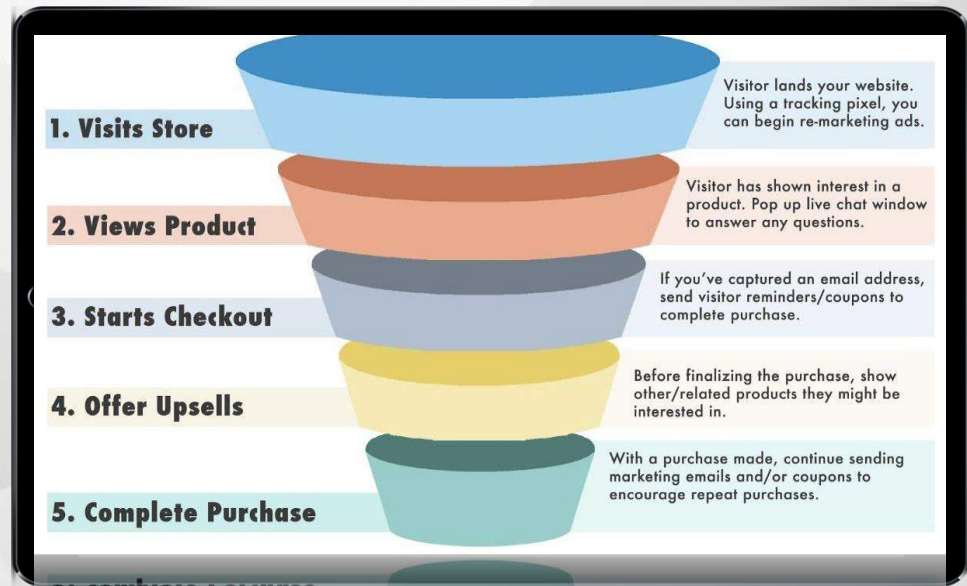


# Analytics

- 1**
- ## Customer & Solution Perforation Tracking
- View customer engagement with application
  - View demographic detail of the solution
  - Custom event tagging

- 2**
- ## Crash Analytics
- Application crash impact analysis
  - Capture affected device detail, date/time and OS versions

- 3**
- ## Funneling & Event tagging
- Funnel view built to track customer sale conversion
  - Custom event tagging to monitor any specific user actions.



For Information call us on 0636872404 or email us [info@reliancecorporation.co.za](mailto:info@reliancecorporation.co.za)

# Analytics

1

## Customer Retention Tracking

- View repeat customer, which helps store management to motivate such customers.
- Monitor Daily and Monthly active users

2

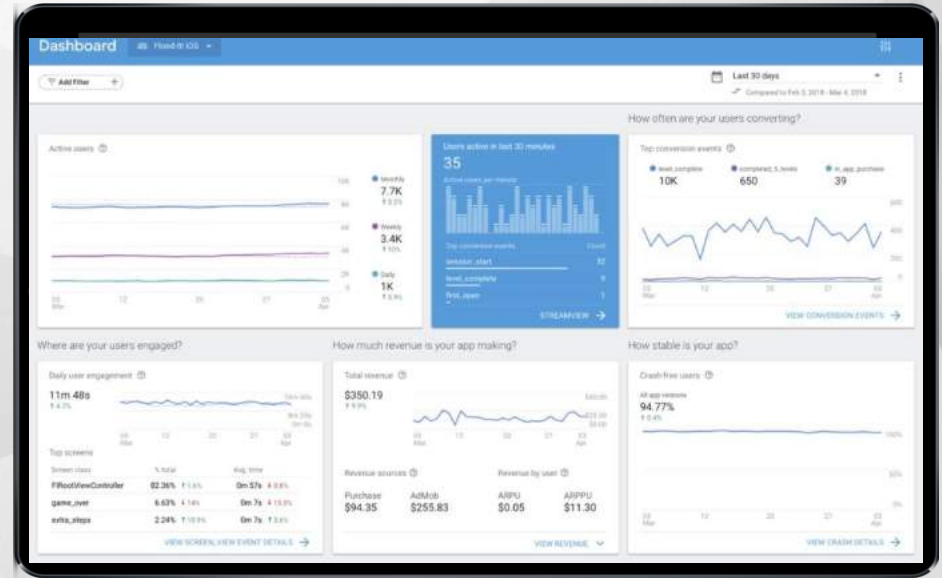
## Prediction

- Analytics events data helps to understand users behavior app
- Reports with analysis based on time or user group or product sets.

3

## Testflight & Beta Release

- Distribute pre-release versions of the application to the trusted testers or group to understand application behavior before launching wider audience



For Information call us on 0636872404 or email us [info@reliancecorporation.co.za](mailto:info@reliancecorporation.co.za)

# Customer Engagement

---

For Information call us on 0636872404 or email us [info@reliancecorporation.co.za](mailto:info@reliancecorporation.co.za)

# SMS, Email & Push Notification

1

## Send Order status notification

- Customer receive Order status via SMS, Email and Push notifications
- Store Manager receives Email alert on any new orders received to the Store

2

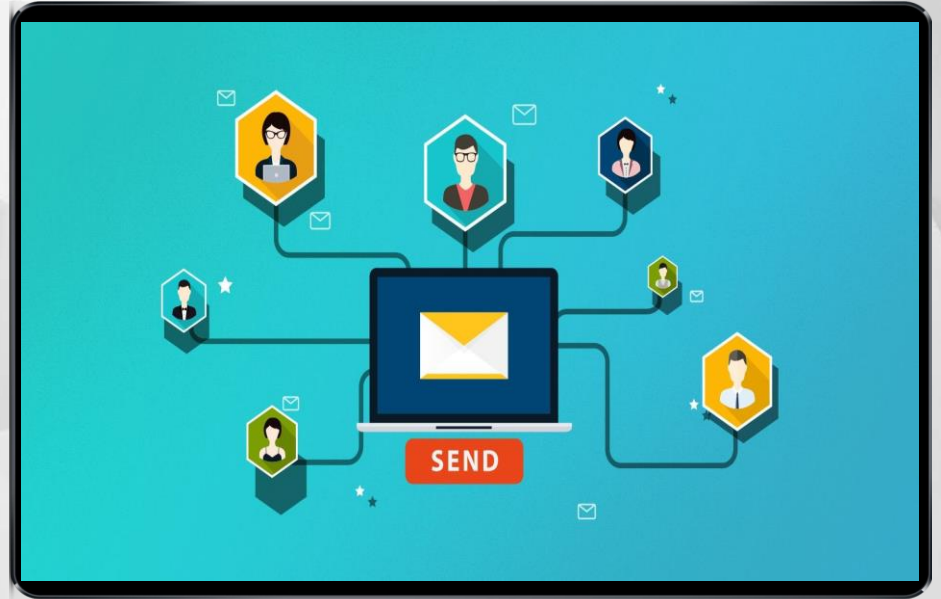
## Marketing Notification

- Store Manager can send advertisements, special occasion wishes and other marketing messages via SMS, EMAIL and Push notifications

3

## Store Report

- Store manager receives Email and SMS notification on suspension sale alert and End of day sale reports.



For Information call us on 0636872404 or email us [info@reliancecorporation.co.za](mailto:info@reliancecorporation.co.za)

# Remote Configuration, Social Share & Machine Learning

## 1 Remote Configuration

- Enable or Disable application features, store products, store settings remotely.

## 2 Social Share

- Share and promote the application with Friends & Families using social share option
- Without distracting customer, deep linking route the customer to application

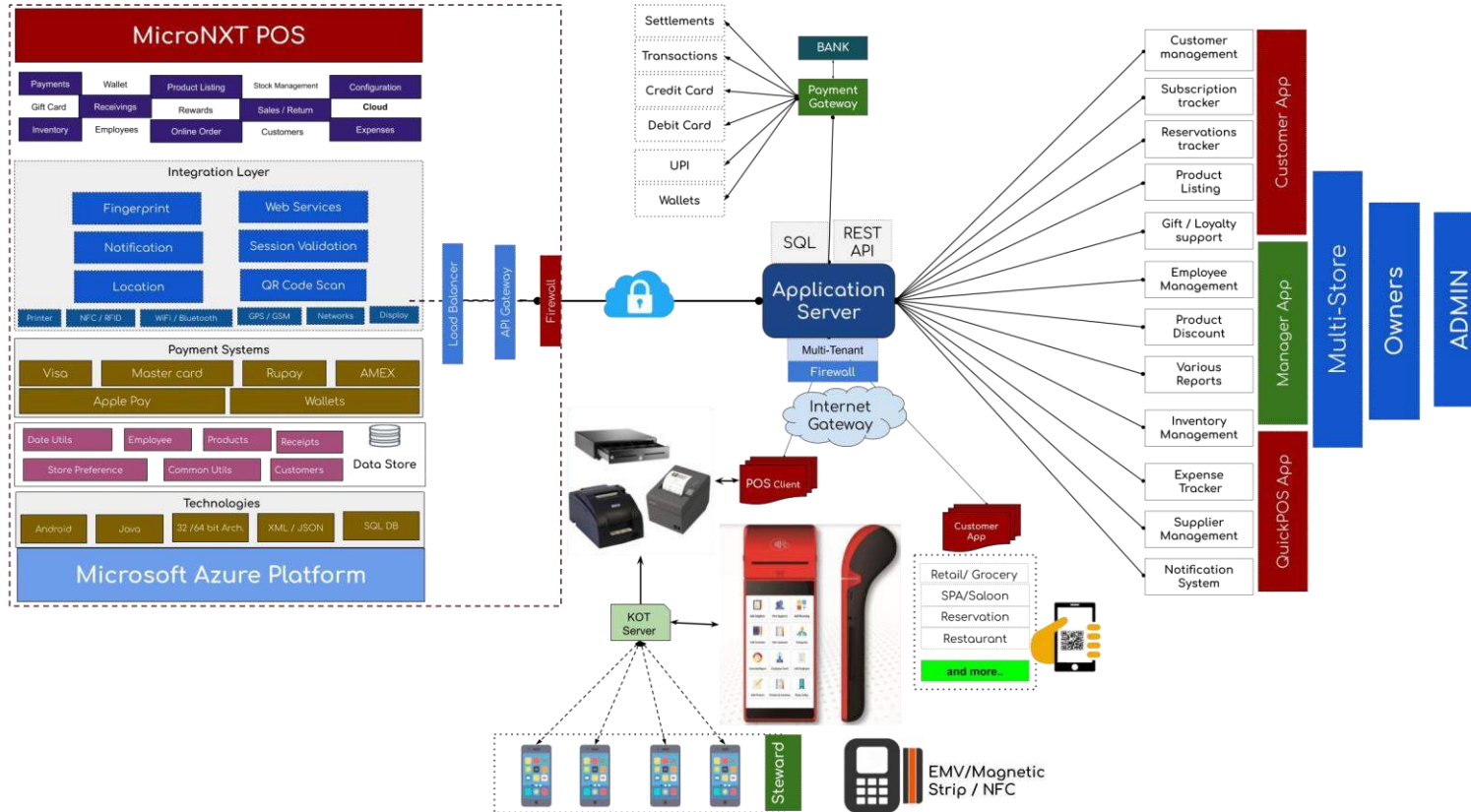
## 3 Machine Learning

- System leverages the capability of Beacons, NFC, RFID, Natural Language Processing to serve customer better experience



For Information call us on 0636872404 or email us [info@reliancecorporation.co.za](mailto:info@reliancecorporation.co.za)

# System Flow



---

## Road Map

Target Date: 01/01/2020

No	Feature	Feature ID	Description	Status

For Information call us on 0636872404 or email us [info@reliancecorporation.co.za](mailto:info@reliancecorporation.co.za)